



Cable ID: LCS5L-11CU-0305-S 1

Test Limit: ISO11801 PL Class D

Limits Version: V7.4

Date / Time: 2026/01/28 10:25:11

Headroom 9.6 dB (NEXT 1,2-3,6)

Cable Type: Cat 5e F/UTP

NVP: 69.0%

Main: Versiv

S/N: 1944019

Software Version: V6.4 Build 4

Calibration Date: 2024/12/30

Adapter: DSX-8000 (DSX-PLA804)

S/N: 24030099

Test Summary: PASS

Remote: Versiv

S/N: 1944025

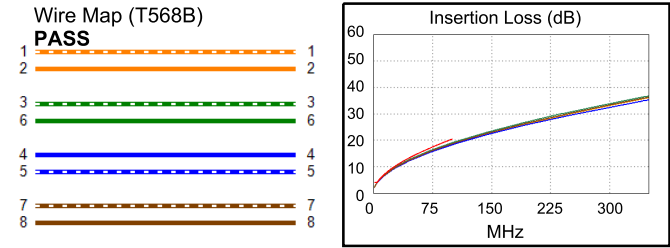
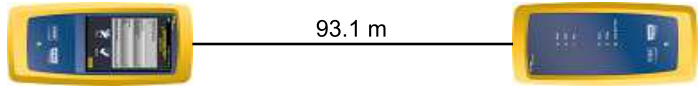
Software Version: V6.4 Build 4

Calibration Date: 2024/12/30

Adapter: DSX-8000R (DSX-PLA804)

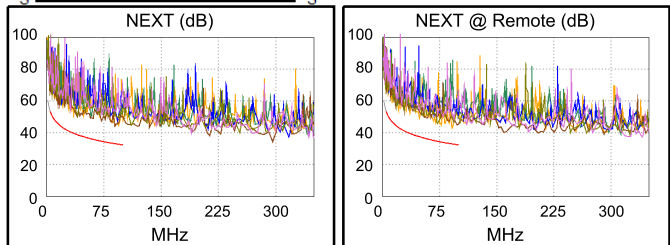
S/N: 24030090

Length (m), Limit 90.0	[Pair 1,2]	93.1
Prop. Delay (ns), Limit 498	[Pair 3,6]	471
Delay Skew (ns), Limit 44	[Pair 3,6]	21
Resistance (ohms), Limit 21.00	[Pair 3,6]	17.44
Insertion Loss Margin (dB)	[Pair 3,6]	1.3
Frequency (MHz)	[Pair 3,6]	100.0
Limit (dB)	[Pair 3,6]	20.4

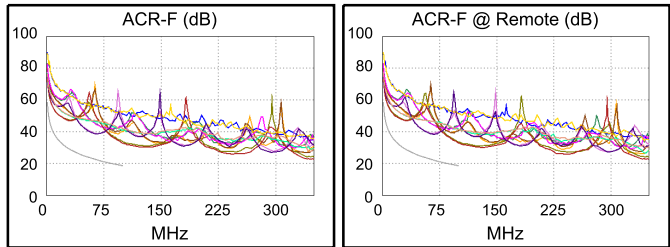


Worst Case Margin Worst Case Value

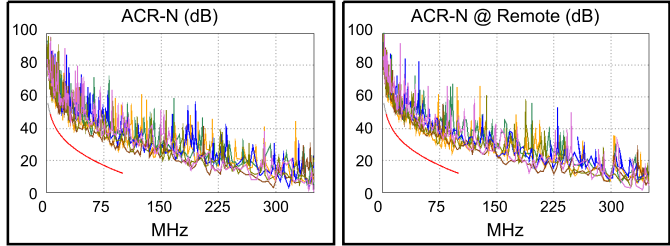
PASS	MAIN	SR	MAIN	SR
Worst Pair	3,6-4,5	1,2-3,6	3,6-4,5	1,2-3,6
NEXT (dB)	10.6	9.6	11.0	9.6
Freq. (MHz)	39.5	91.3	89.8	91.3
Limit (dB)	38.9	33.0	33.1	33.0
Worst Pair	3,6	3,6	3,6	3,6
PS NEXT (dB)	11.5	11.0	11.5	11.4
Freq. (MHz)	94.0	28.9	94.0	92.5
Limit (dB)	29.7	38.1	29.7	29.9



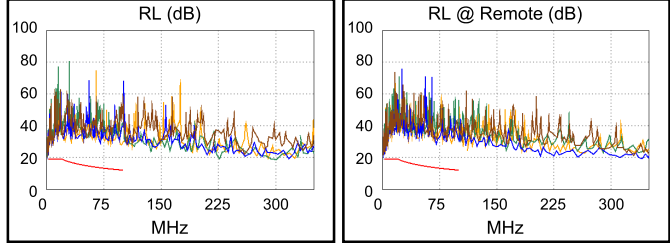
PASS	MAIN	SR	MAIN	SR
Worst Pair	4,5-3,6	4,5-3,6	4,5-3,6	4,5-3,6
ACR-F (dB)	14.0	14.3	14.0	14.3
Freq. (MHz)	100.0	100.0	100.0	100.0
Limit (dB)	18.6	18.6	18.6	18.6
Worst Pair	3,6	3,6	3,6	3,6
PS ACR-F (dB)	15.5	15.2	16.1	16.4
Freq. (MHz)	2.3	3.3	100.0	100.0
Limit (dB)	48.6	45.4	15.6	15.6



PASS	MAIN	SR	MAIN	SR
Worst Pair	1,2-3,6	1,2-3,6	1,2-3,6	1,2-3,6
ACR-N (dB)	11.1	10.9	12.9	10.9
Freq. (MHz)	36.0	91.3	94.0	91.3
Limit (dB)	27.8	13.5	13.0	13.5
Worst Pair	3,6	3,6	3,6	3,6
PS ACR-N (dB)	12.2	11.3	12.7	12.7
Freq. (MHz)	41.0	28.8	94.0	92.5
Limit (dB)	23.0	27.7	10.0	10.3



PASS	MAIN	SR	MAIN	SR
Worst Pair	1,2	1,2	1,2	1,2
RL (dB)	5.7	5.8	5.7	5.8
Freq. (MHz)	2.6	3.6	2.6	3.6
Limit (dB)	19.0	19.0	19.0	19.0



Compliant Network Standards:
 10BASE-T 100BASE-TX 100BASE-T4
 1000BASE-T 2.5GBASE-T ATM-25
 ATM-51 ATM-155 100VG-AnyLan
 TR-4 TR-16 Active TR-16 Passive